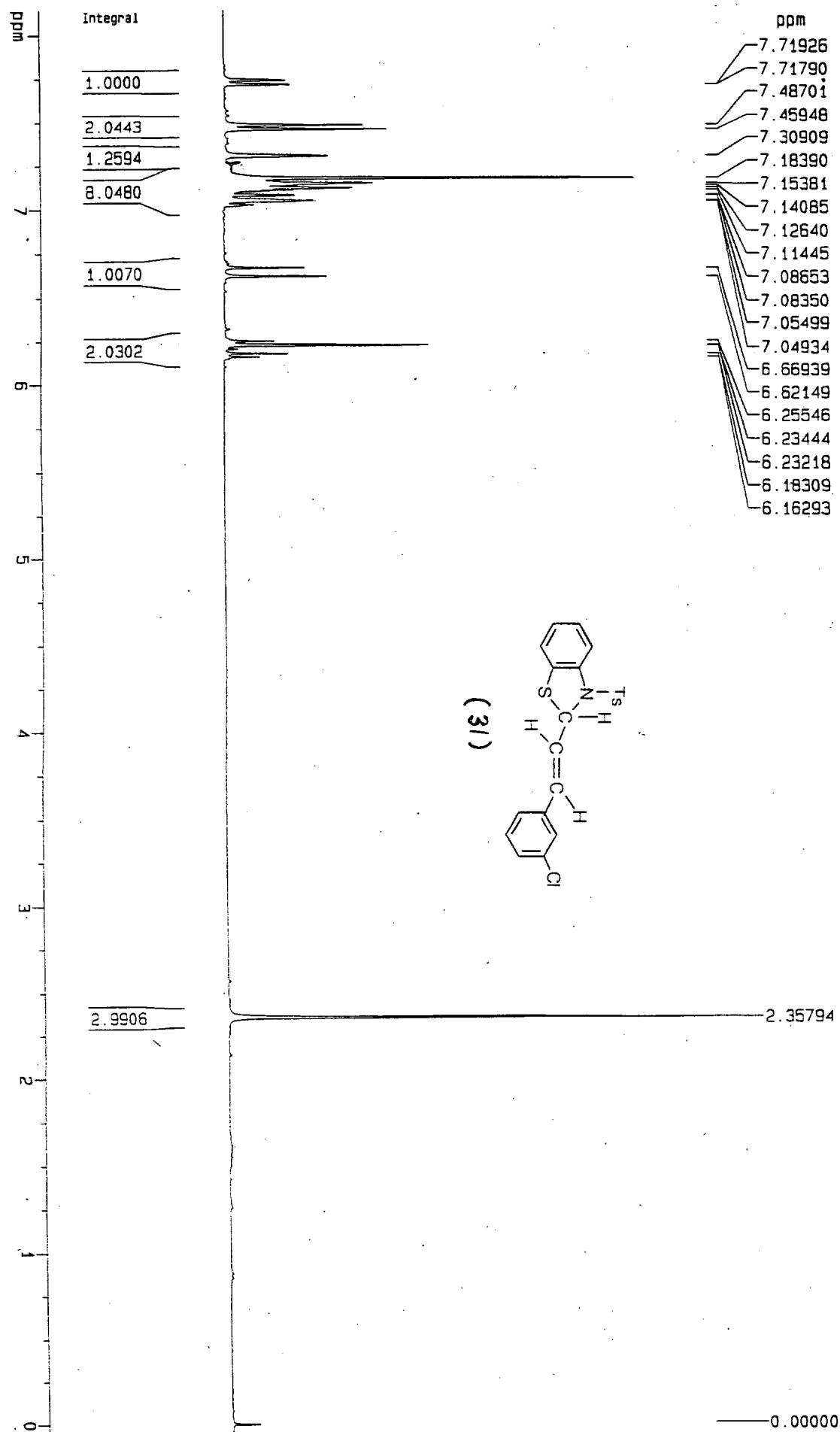


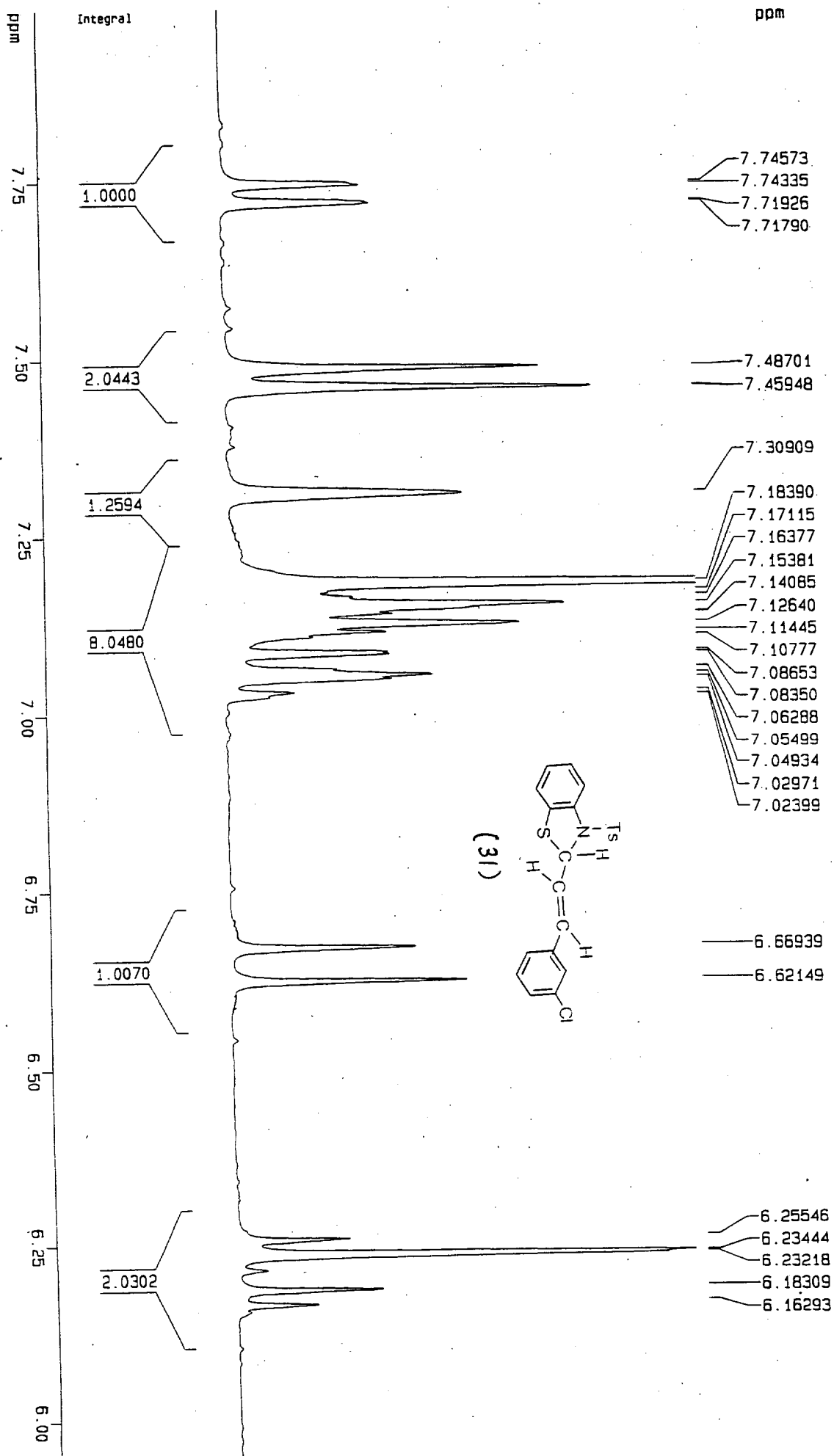
Current Data Parameters  
 NAME BN4\_170-13C  
 EXPNO 3  
 PROCNO 1

F2 - Acquisition Parameters  
 Date\_ 980727  
 Time 9.43  
 INSTNUM 5 mm Multinu  
 PROBUID zqdc  
 PULPROG 109128  
 TD 3340  
 SOLVENT CDCl3  
 NS 0  
 DS 0  
 SWH 20449.898 Hz  
 FIDRES 0.187394 Hz  
 AQ 2.6082296 sec  
 RG 8192  
 DM 24.450 usec  
 DE 4.50 usec  
 TE 300.0 K  
 011 0.0300000 sec  
 PL12 16.00 dB  
 CPDPRG2 waltz16  
 PCPD2 100.00 usec  
 SF02 300.1307736 MHz  
 NUC2 1H  
 PL2 120.00 dB  
 D1 1.00000000 sec  
 P1 6.70 usec  
 DE 4.50 usec  
 SF01 75.4759531 MHz  
 NUC1 13C  
 PL1 -6.00 dB

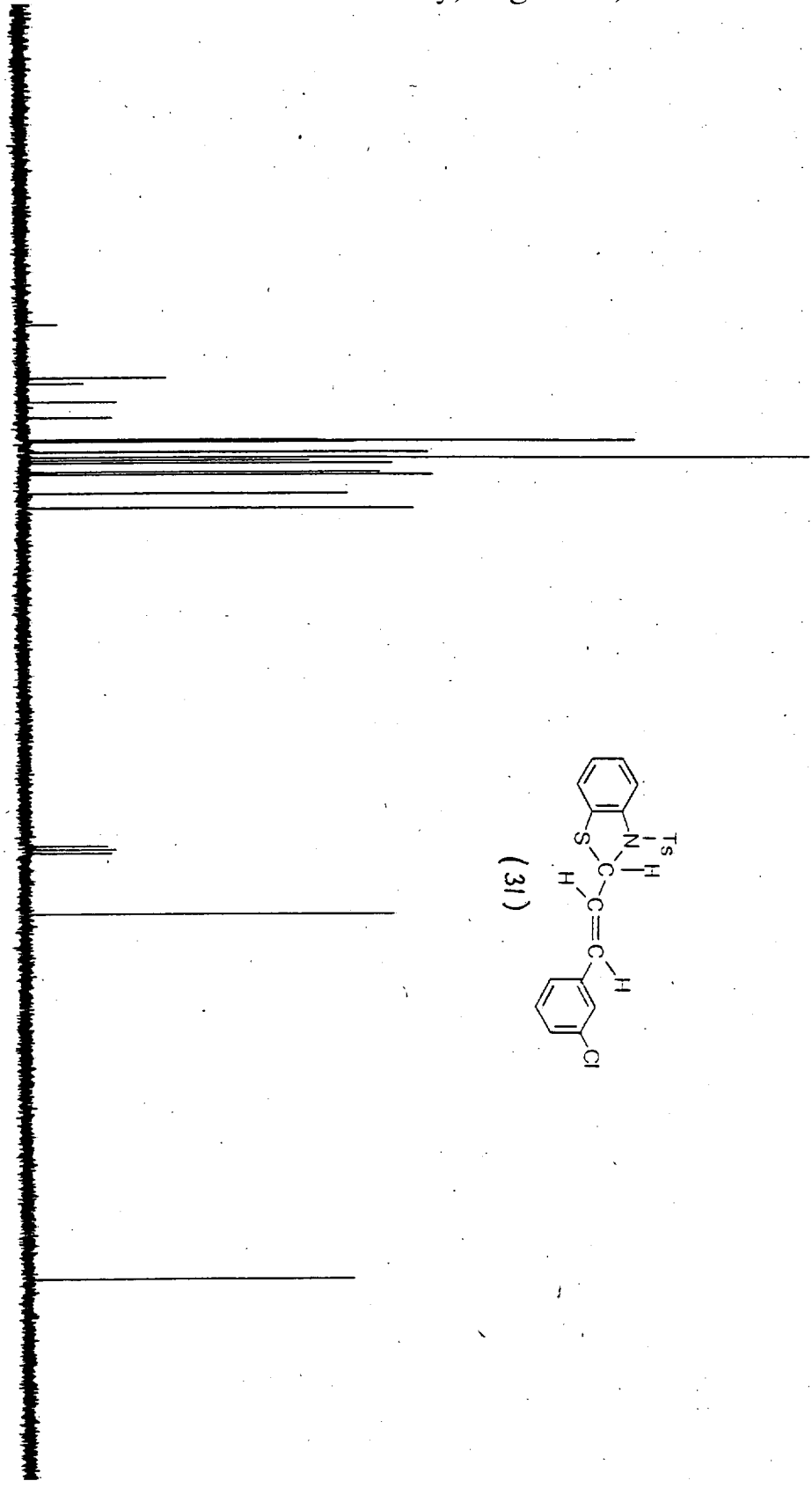
F2 - Processing parameters  
 S1 65536  
 SF 75.4677588 MHz  
 NDM EM  
 SSB 0  
 LB 0.20 Hz  
 GB 0  
 PC 1.00

1D NMR plot parameters  
 CX 22.00 cm  
 F1P 186.632 ppm  
 F1 14084.67 Hz  
 F2P -3.953 ppm  
 F2 -298.36 Hz  
 PPMCM 8.66226 ppm/cm  
 HZCM 653.77360 Hz/cm





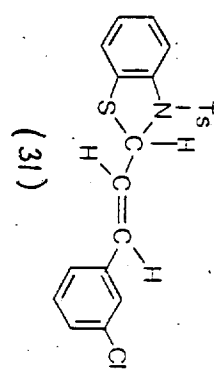
ppm  
160  
140  
120  
100  
80  
60  
40  
20  
0



- 144.916
- 138.005
- 137.333
- 134.917
- 132.840
- 130.125
- 129.932
- 129.780
- 128.574
- 128.503
- 127.877
- 127.525
- 127.172
- 125.959
- 125.636
- 123.189
- 121.391

- 77.846
- 77.424
- 76.999
- 69.085

22.045

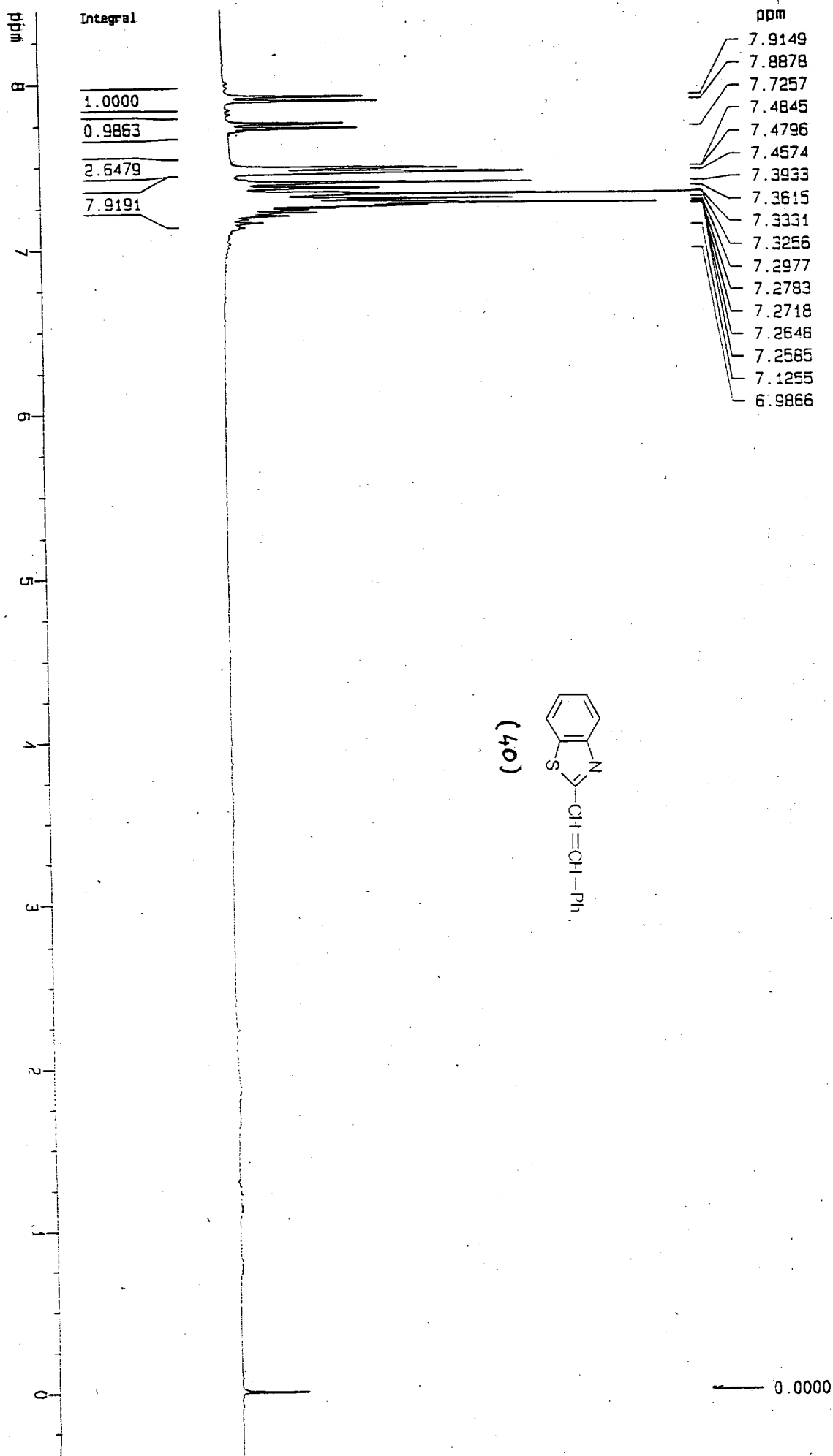


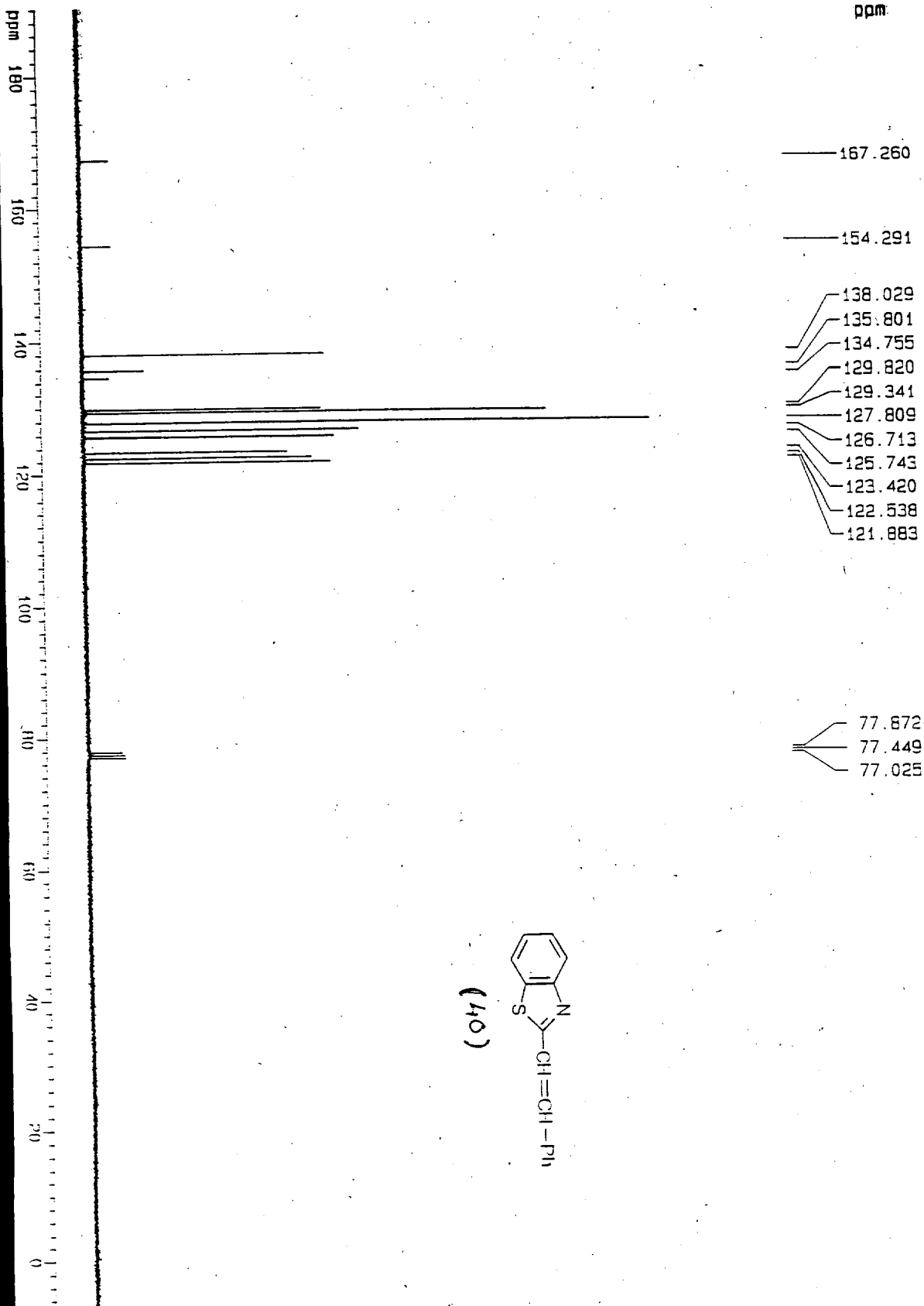
Current Data Parameters  
NAME BNA\_1R5-13C  
EXPNO 3  
PROCNO 1

F2 - Acquisition Parameters  
Date\_ 980812  
Time 10.10  
INSTRUM dpx300  
PROBHD 5 mm Multinu  
PULPROG zgpg  
TU 109128  
SOLVENT CDCl3  
NS 3393  
DS 0  
SM 20449.898 Hz  
FIDRES 0.187394 Hz  
AQ 2.6582296 sec  
RG 8192  
DW 24.450 usec  
DE 4.50 usec  
TE 300.0 K  
D1 0.030000 sec  
PL1 16.00 dB  
PL2 16.00 dB  
PL12 16.00 dB  
GPRPG2 Waltz16  
PCPU2 100.00 usec  
SFO2 300.1307736 MHz  
NUC2 13C  
PL2 120.00 dB  
D1 1.00000000 sec  
P1 6.70 usec  
DE 4.50 usec  
SFO1 75.4759531 MHz  
NUC1 13C  
PL1 -6.00 dB

F2 - Processing Parameters  
SI 65536  
SF 75.4677190 MHz  
KDN EN  
SSB 0  
L0 0.20 Hz  
G0 0  
PC 1.00

1D NMR plot parameters  
CX 22.00 cm  
F1P 186.765 dbm  
F1 14094.72 Hz  
F2P -3.799 dbm  
F2 -286.71 Hz  
P1NCM B.66200 DPM/C  
MZNM 653.70135 Hz/cm





- 167.260
- 154.291
- 138.029
- 135.801
- 134.755
- 129.820
- 129.341
- 127.809
- 126.713
- 125.743
- 123.420
- 122.538
- 121.883
- 77.872
- 77.449
- 77.025

Current Data Parameters  
 NAME DM4.197-13C  
 EXPNO 3  
 PROCNO 1

F2 - Acquisition Parameters

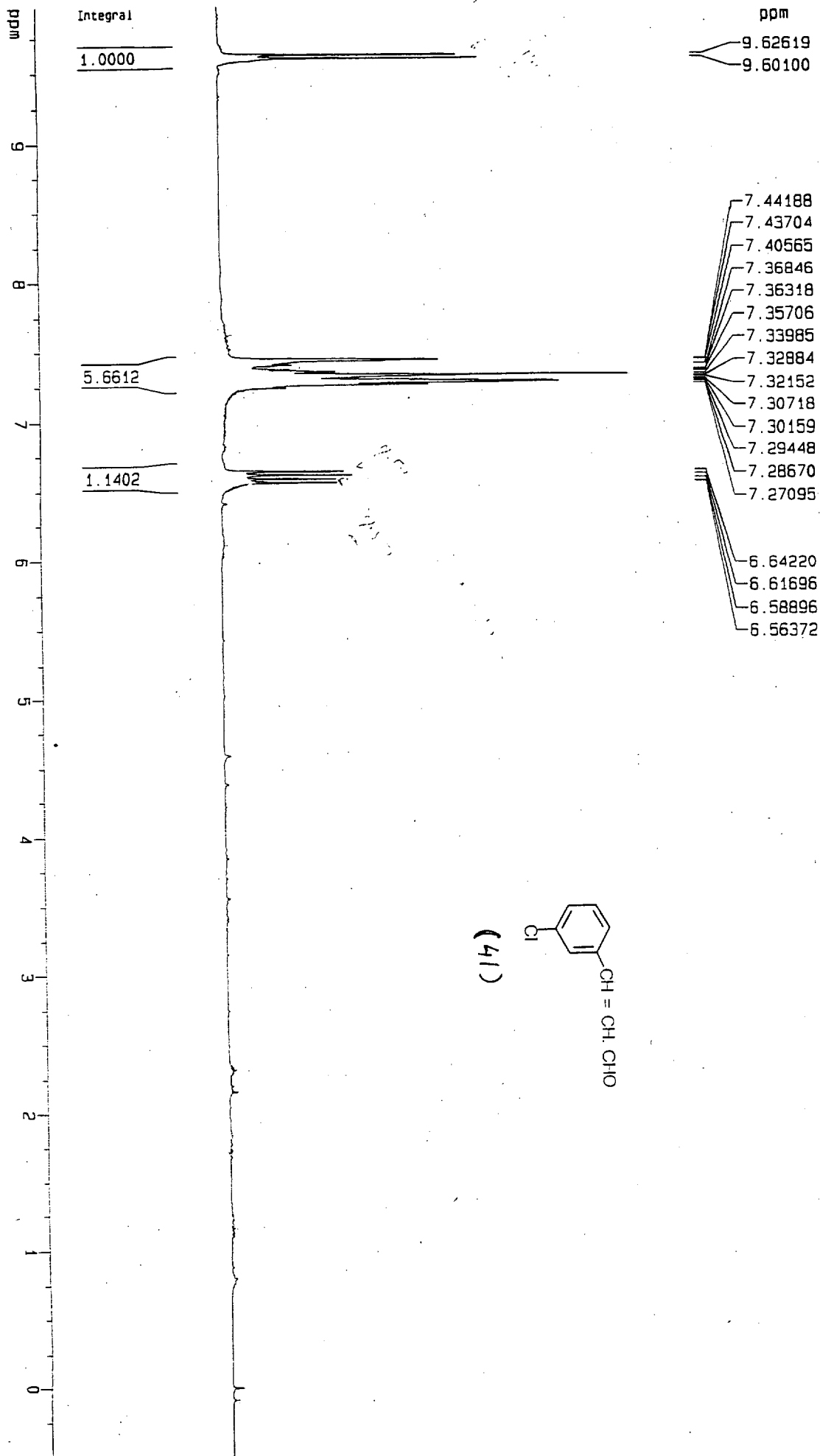
Date\_ 981224  
 Time 9.34  
 INSTRUM dpX300  
 PULPROG 5 mm Multinu  
 PULPROG 2gdc  
 TD 109128  
 SOLVENT CDCl3  
 NS 3876  
 DS 0  
 SMI 20449.898 Hz  
 F1 FIDRES 0.187394 Hz  
 AG 2.6682296 sec  
 RG 8192  
 DM 24.450 usec  
 DE 4.50 usec  
 TE 300.0 K  
 d11 0.0300000 sec  
 PL12 15.00 dB  
 CRUPL16 Multiz16  
 PCOR2 100.00 usec  
 SFO2 300.1310175 MHz

NUC1 1H  
 PL2 120.00 dB  
 D1 1.0000000 sec  
 P1 6.70 usec  
 DE 4.50 usec  
 SFO1 75.4759531 MHz  
 NUC1 13C  
 PL1 -8.00 dB

F2 - Processing Parameters

SF 63536  
 SF 75.4677190 MHz  
 MDN EM  
 SSB 0  
 LB -0.20 Hz  
 GB 0  
 GC 1.00

1H NMR pilot parameters  
 CX 22.00 cm  
 F1P 190.181 ppm  
 F1 14392.55 Hz  
 F2P -6.693 ppm  
 F2 -505.10 Hz  
 PRN1M 0.94013 ppm/cm  
 HVCM 575.36753 Hz/cm



(41)

